



SUI LURIS

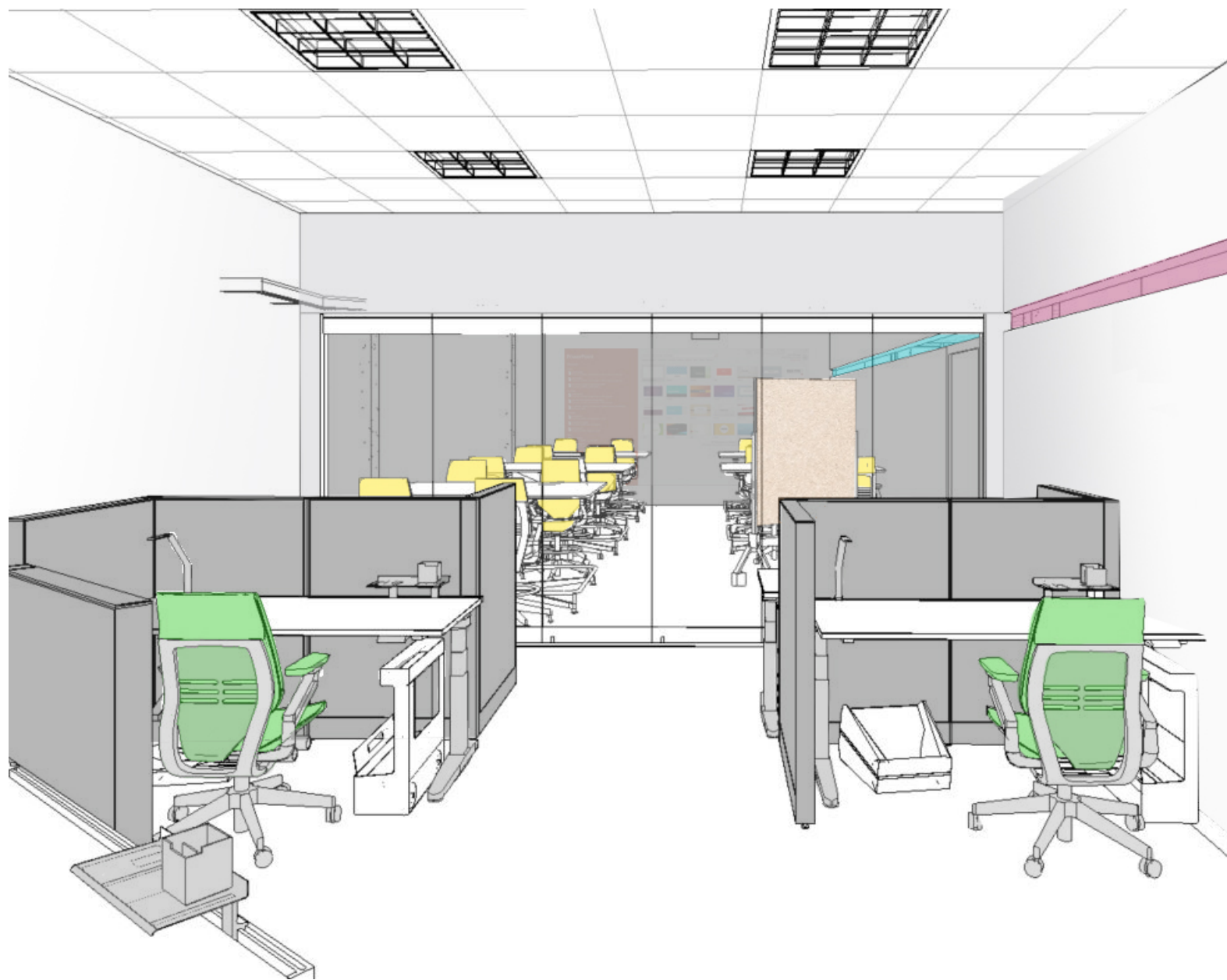
The Sui luris is a space designed to promote confidence and independence. Sui luris is designed for all disabilities from autism, downs and FAS; keeping in mind that all disabilities have differences and similarities. Sui luris provides a mock apartment and mock work environments to teach disabled individuals how to live independently. Because of the nature of the disabilities, Sui luris has a large sensory room and smaller sensory rooms to adjust to the differences and similarities each disability. Not only does it cater to the disabilities by having multiple sensory rooms, it is also designed to diminish distracting sounds, sights and smells to encourage learning.



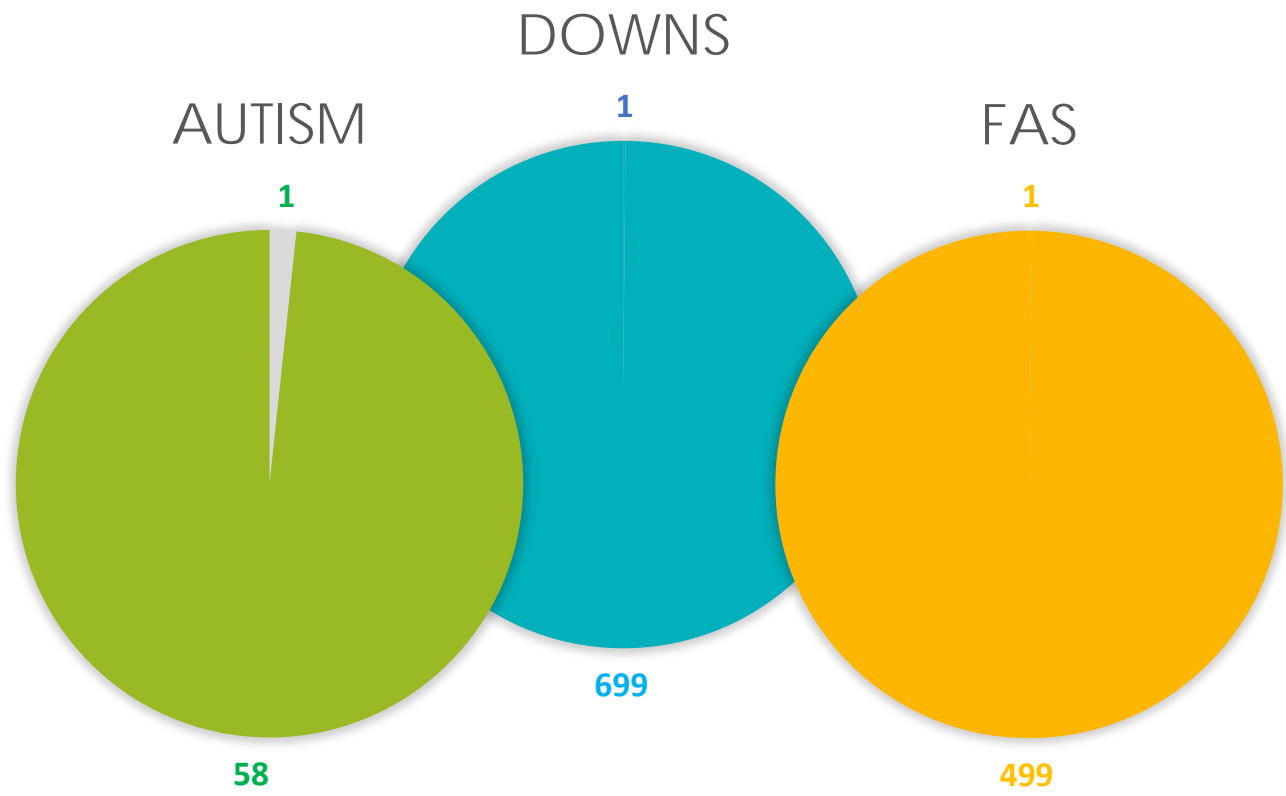
One Sensory Room



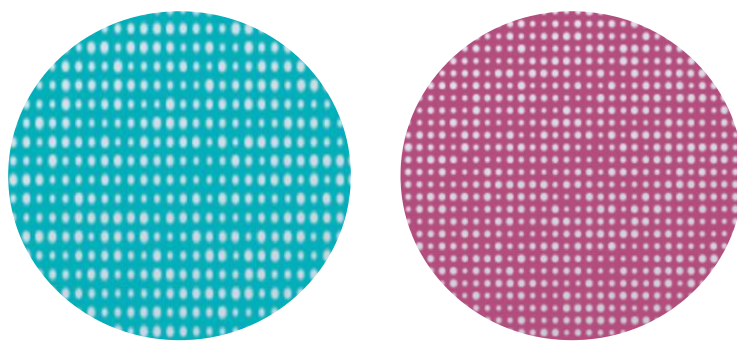
Mock Apartment



Mock Work Environment



In the United states alone, 1 in 59 children have been identified with autism spectrum disorder, 1 in 700 babies are born with Downs syndrome, and 1 in 500 babies are born with Fetal Alcohol Syndrome (FAS). Those babies and children grow into young adults; teaching young adults to live independently is already not easy. Factor in Autism, Downs or FAS, other disabilities, adding more difficulties. How do the parents do it? They get help from Centers for Independent Living (CIL's). CIL's are specialized facilities to help teach disabled individuals basic administrative work, culinary activities or other specialty types of work for disabled individuals to secure a job.



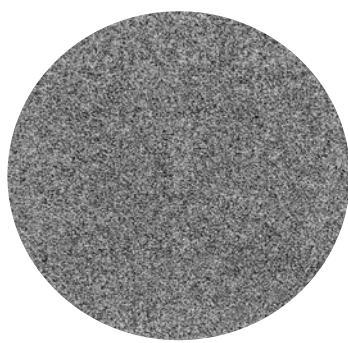
3Form Glass



Cork Flooring



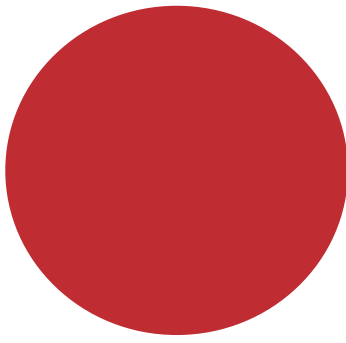
Tile Flooring



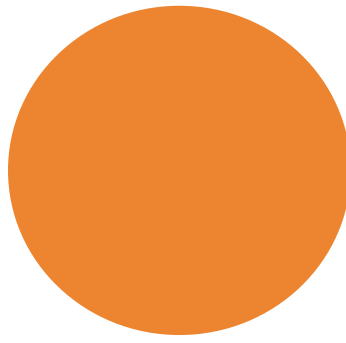
Grey Carpet



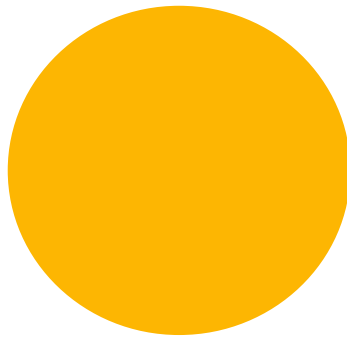
Black Carpet



Paint
SW 6868
Real Red



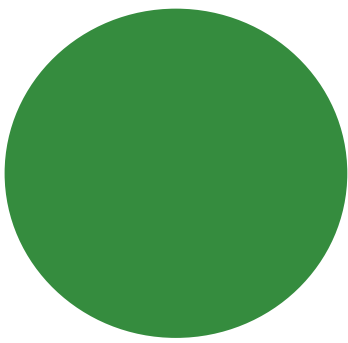
Paint
SW 6887
Navel



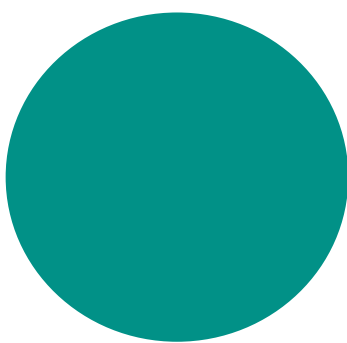
Paint
SW 6905
Goldfinch



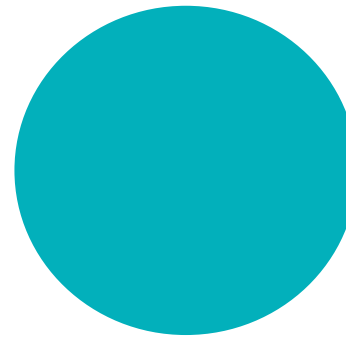
Paint
SW 6921
Electric Lime



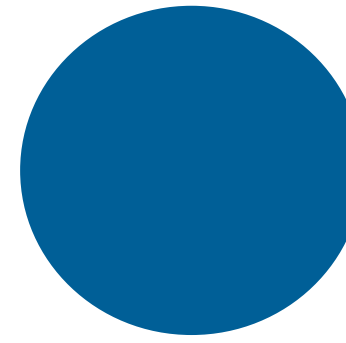
Paint
SW 6925
Envy



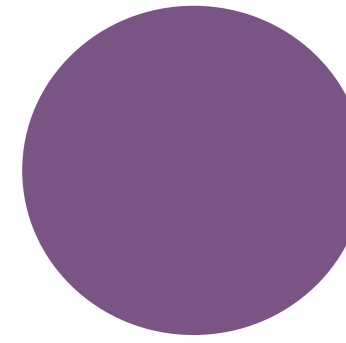
Paint
SW 6941
Nifty Turquoise



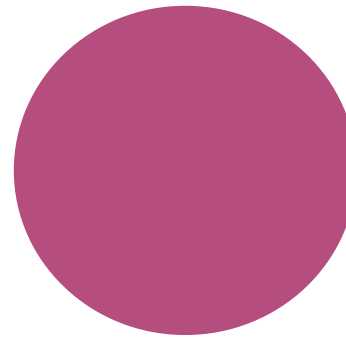
Paint
SW 6950
Calypso



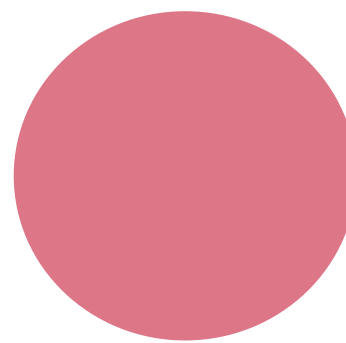
Paint
SW 6965
Hyper Blue



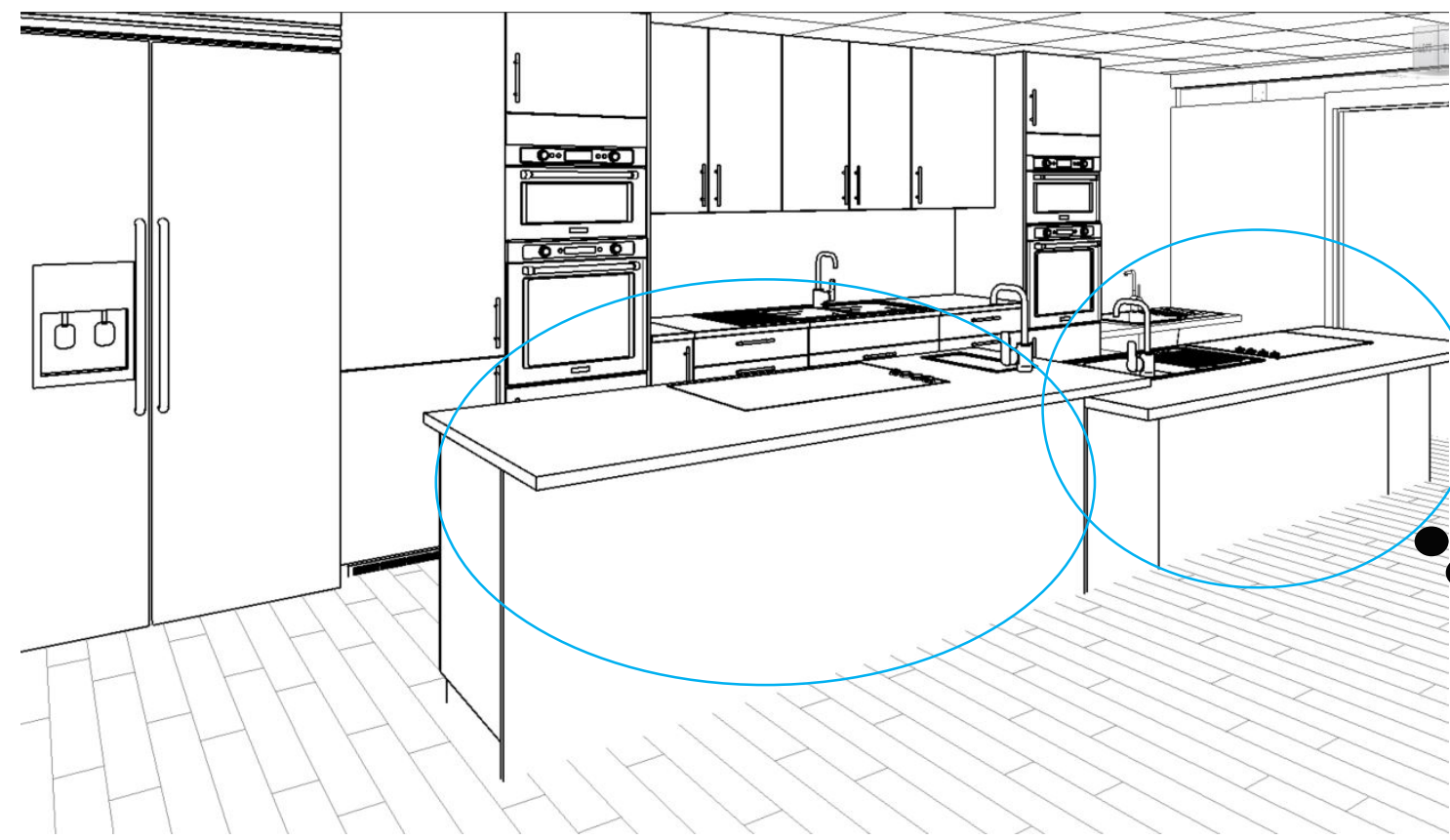
Paint
SW 6981
Passionate Purple



Paint
SW 6840
Exuberant Pink



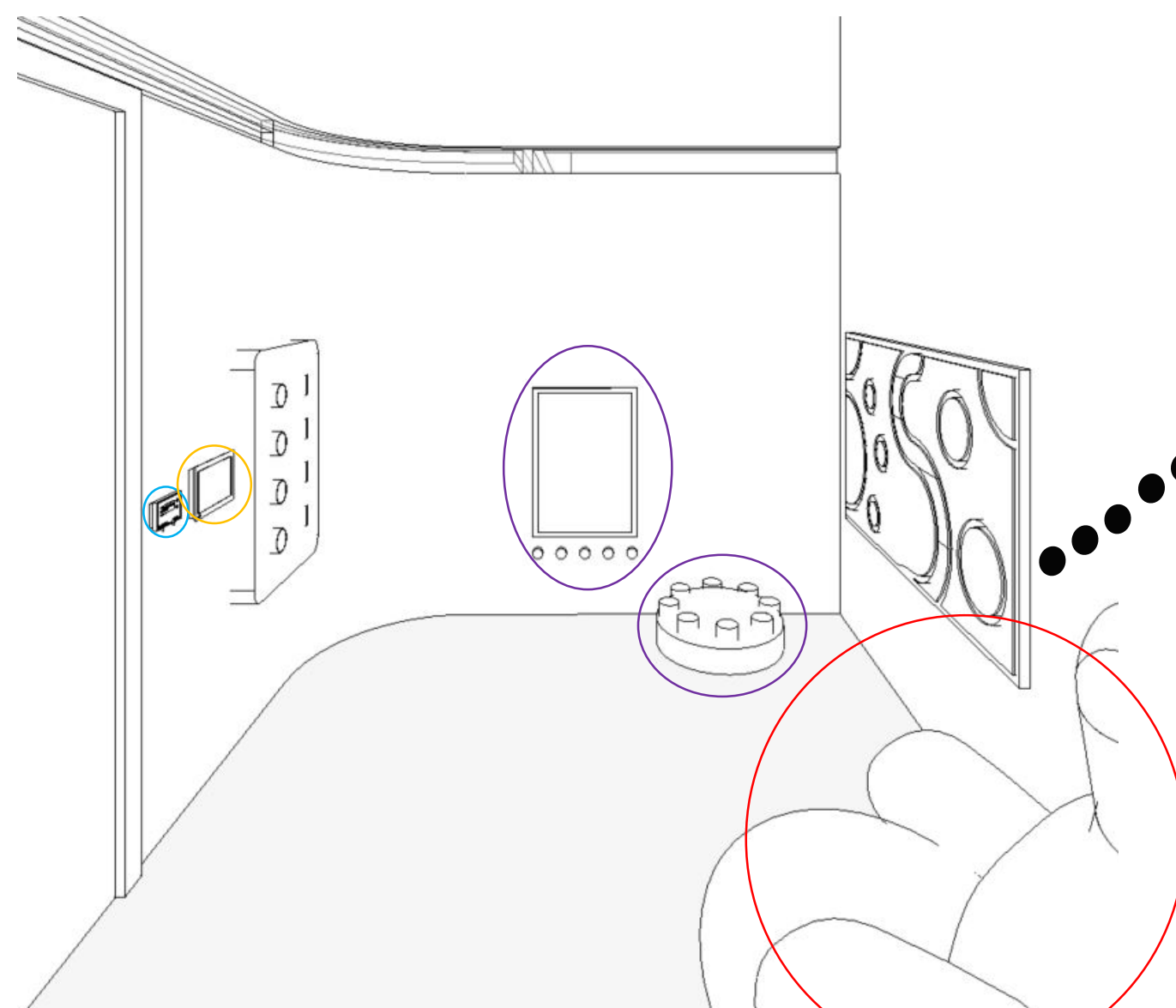
Paint
SW 6585
Coming Up Roses



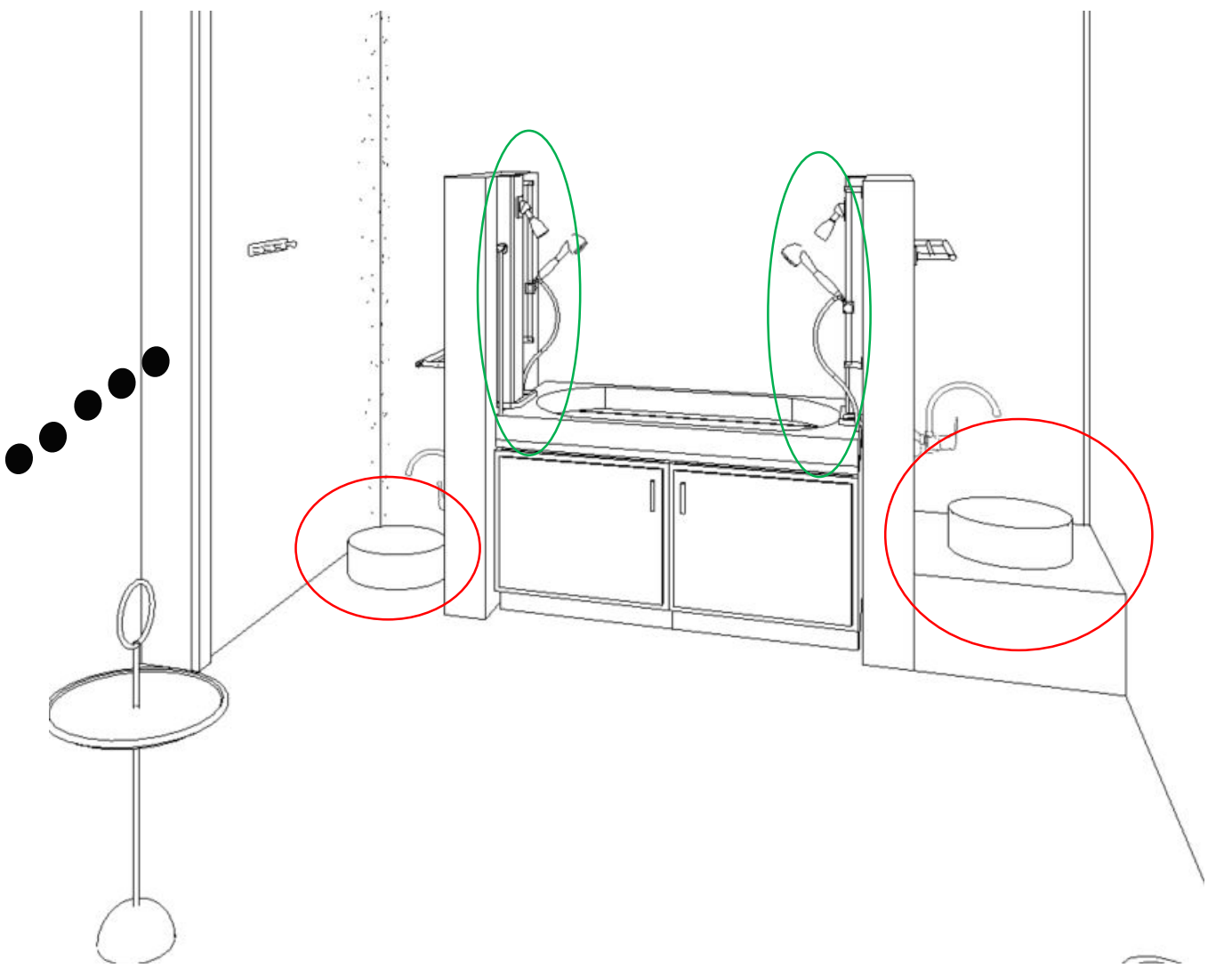
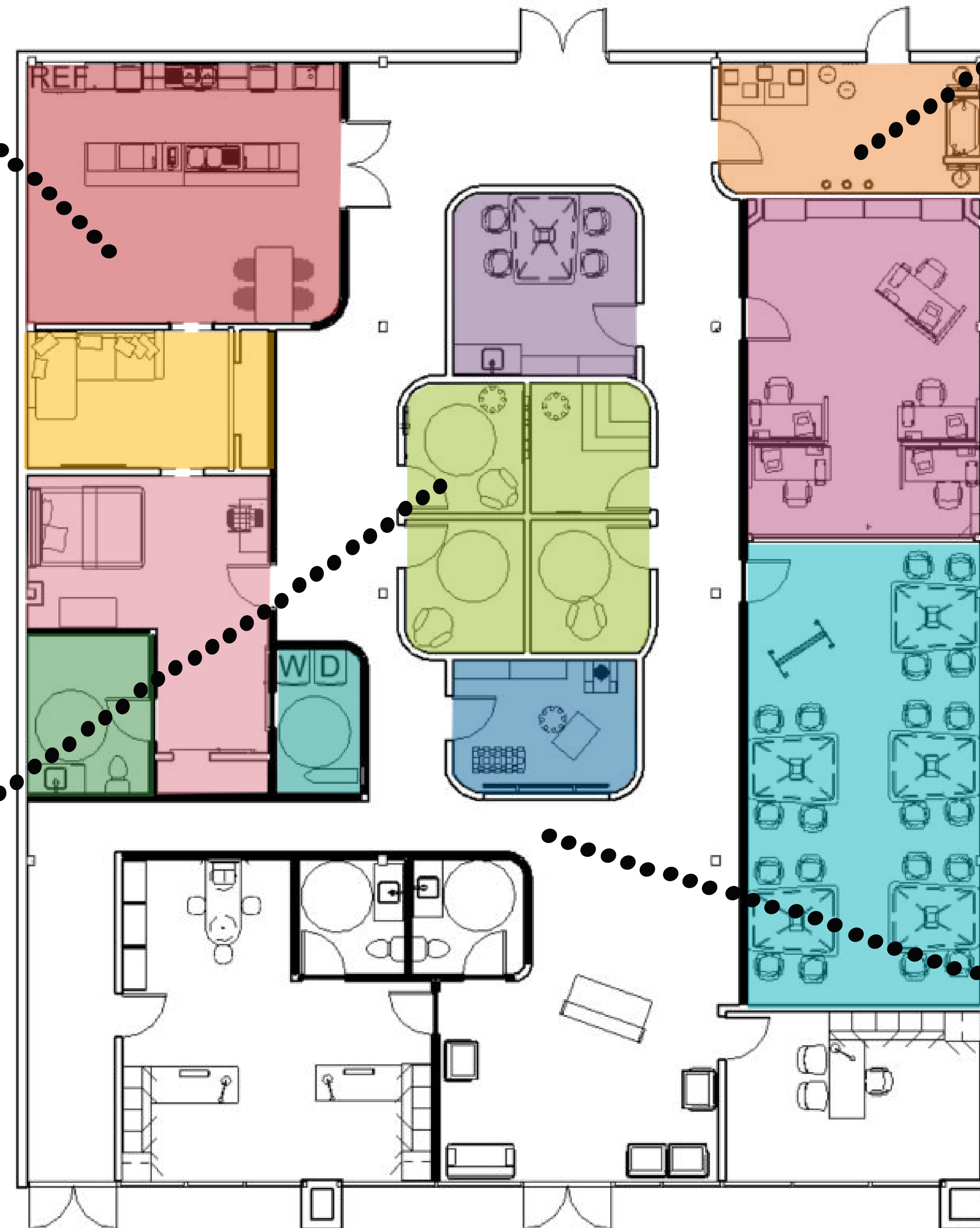
Universal design is most visible in the training kitchen and the pet station. In the Kitchen you can see that there are **two counter heights – one for someone standing and one for someone who is in a wheel chair**. In the pet station there are two different **heights for the water bowl**, to allow someone in a wheelchair or not to be able to partake in taking care of the dogs. Also, there are **a left and a right detachable shower head** to make up for someone being left or right handed.

Heat from electrical lighting products can bother people with certain disabilities, therefore a **controllable air conditioner** is recommended; a **thermostat** controlling the heating and cooling will help the users and caregivers focus on the experience and task at hand not on the inside temperature concerns.

Florescent lighting tends to create a buzzing noise, which stress the users. It is recommended to use spotlights that are **dimnable via a switch** or a remote, to be able to control per situation.



A sensory integration space is a safe space where people go to de-escalate when experiencing a sensory meltdown, or panic. Which decreases the chance for someone accidentally injuring themselves when panic reactions occur. Sensory integration spaces may contain massage equipment, **lighting that slowly changes colors**, bubble tubes, calming scents, music, weighted blankets, **bean bags**, fidgets and **other pieces of equipment designed for calming**.



Using color, soft and hard wall corners as wayfinding, to direct the users in the spaces they can go and where they should not go. The colored glass and the color in the floors corresponds with the room, to have the users to connect the space with the colors. The soft corners guide the users through the space, while the hard sharp corners steer them way.

